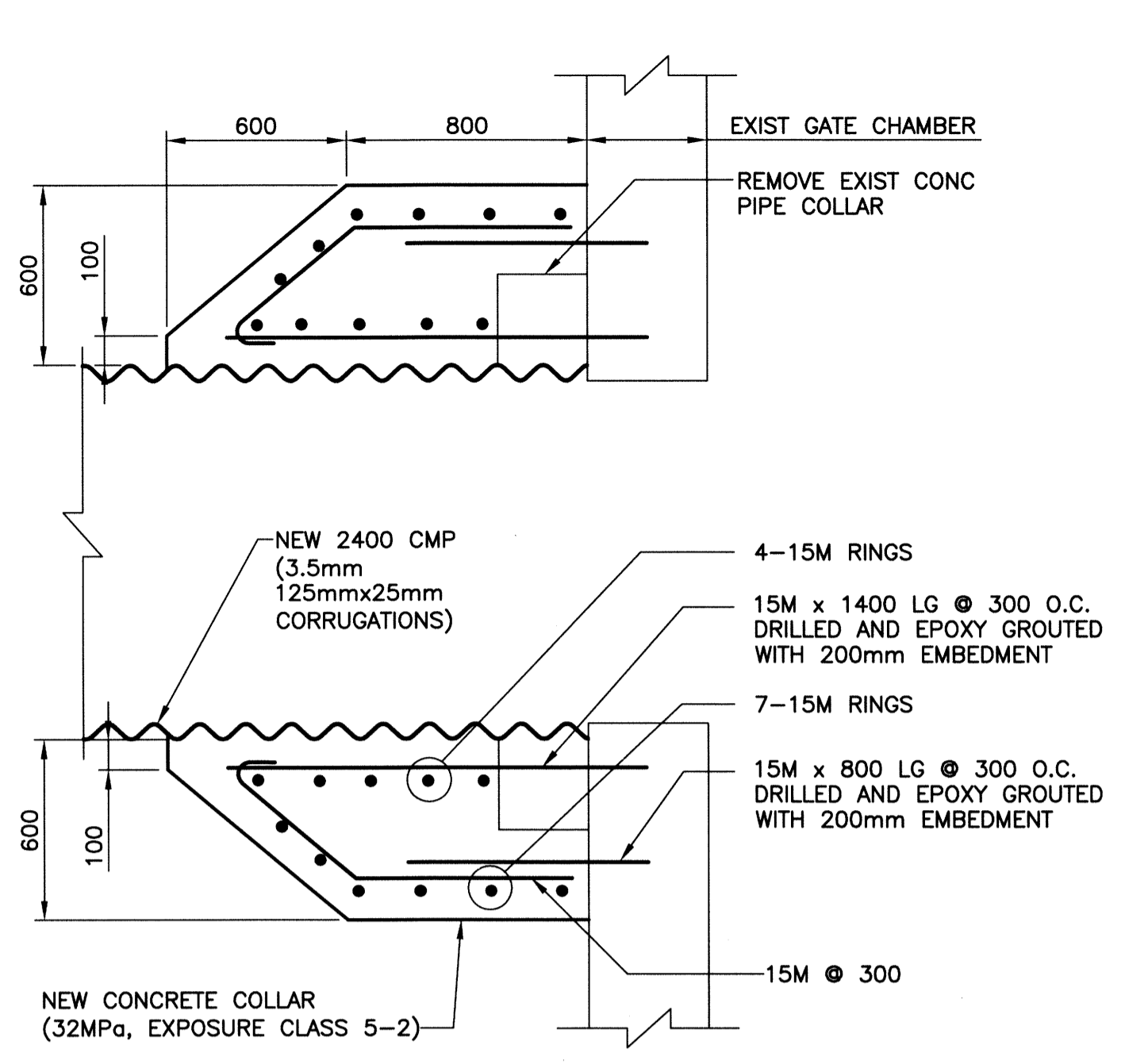
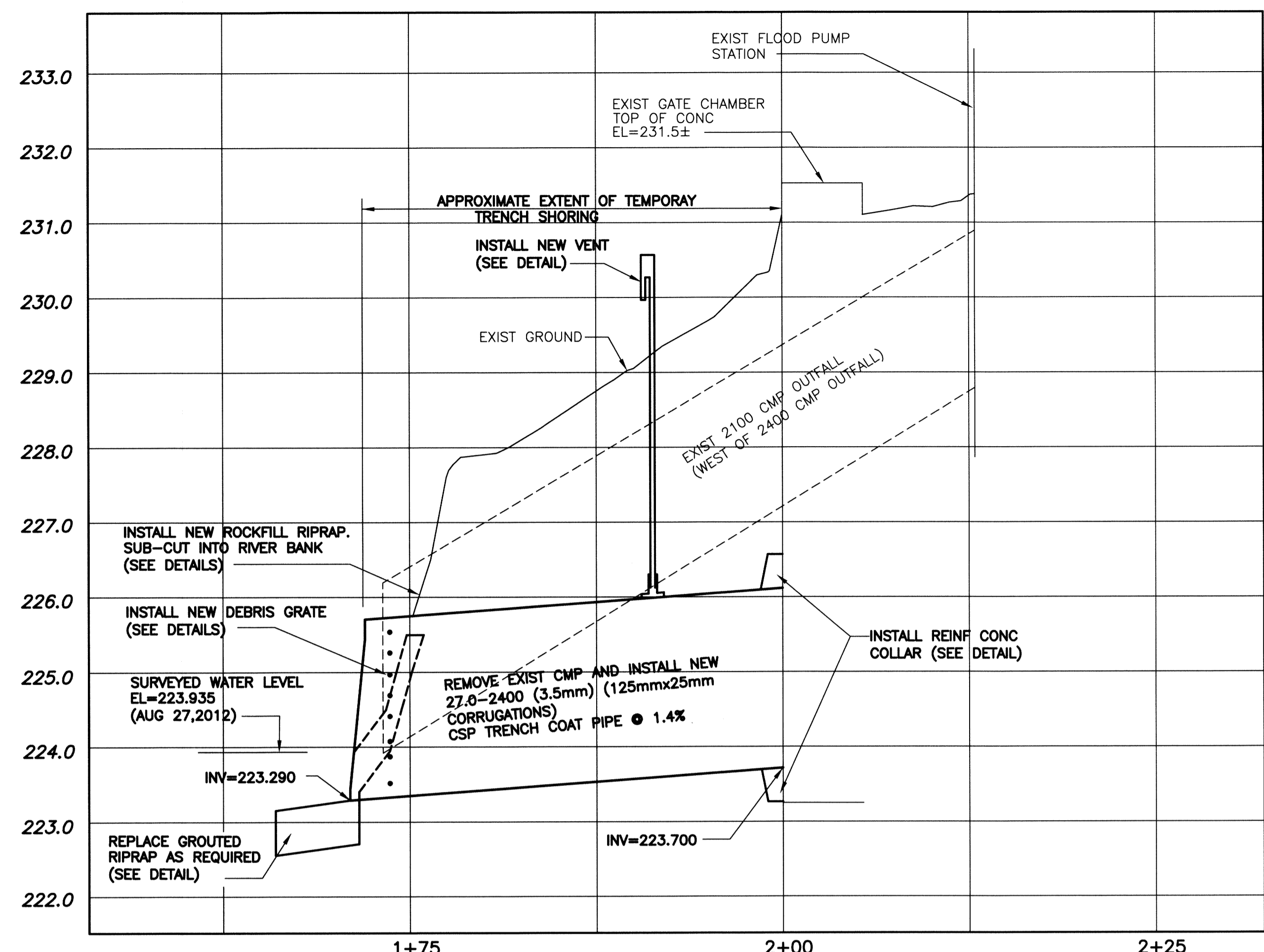
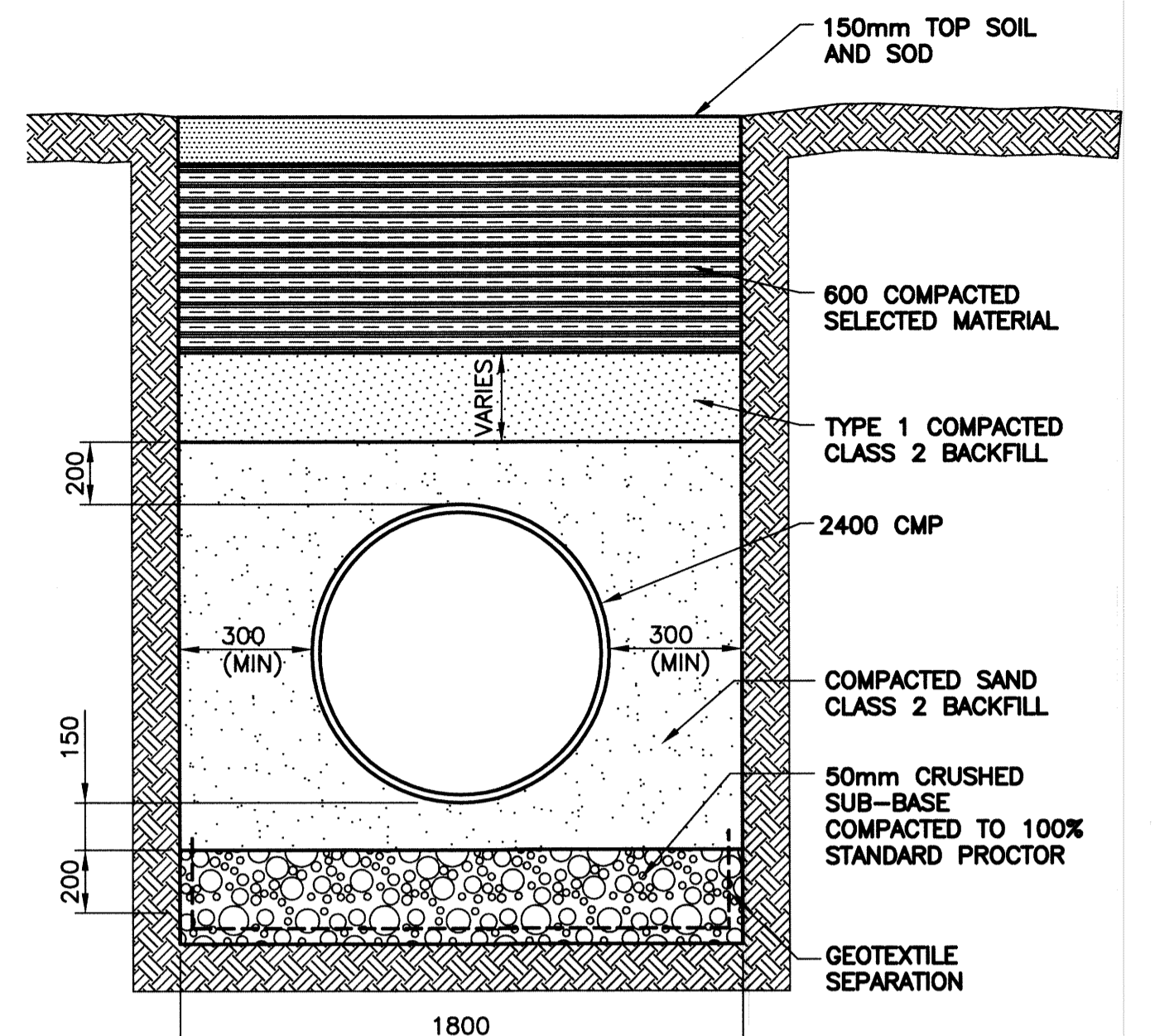
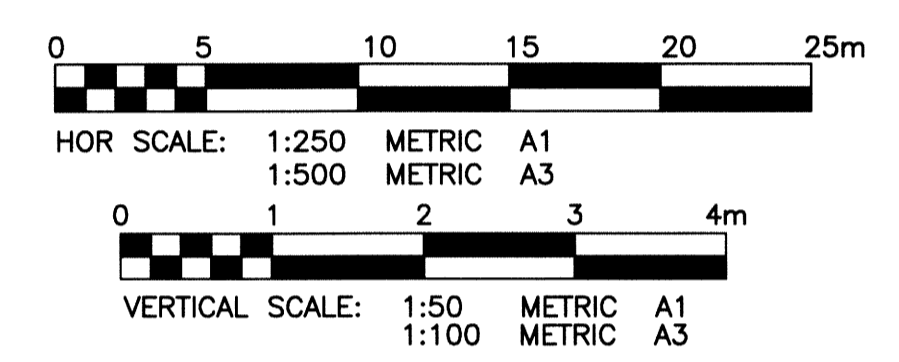


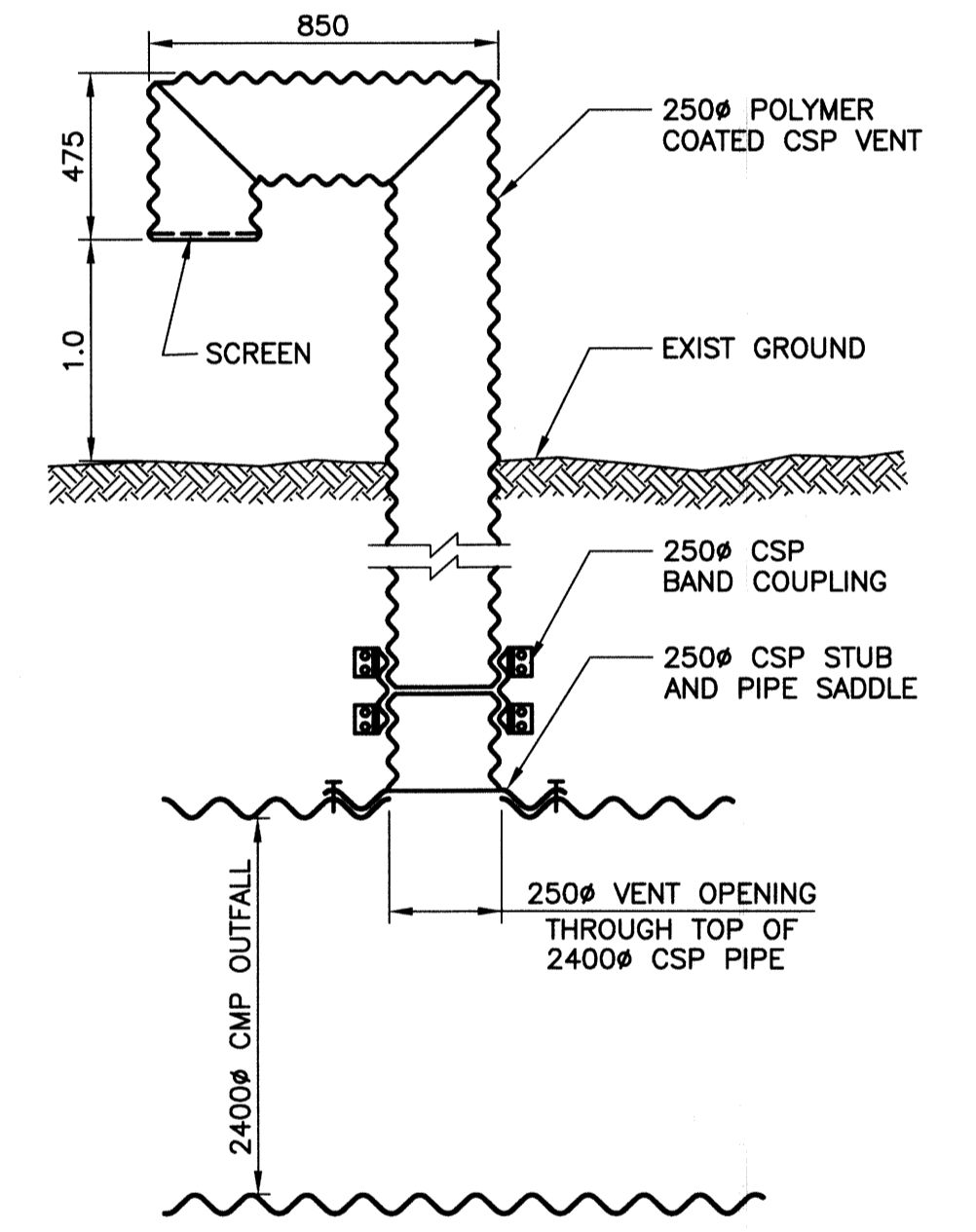
File Name: P:\Projects\2012\12-0107-013\Doc\Control\ToBeIssued\DWG\12-0107-013.LD-6948-Rev 0.dwg - Tab: LD-6948 Plotted By: D.Deroche 12/11/29 [Thu 11:58am]



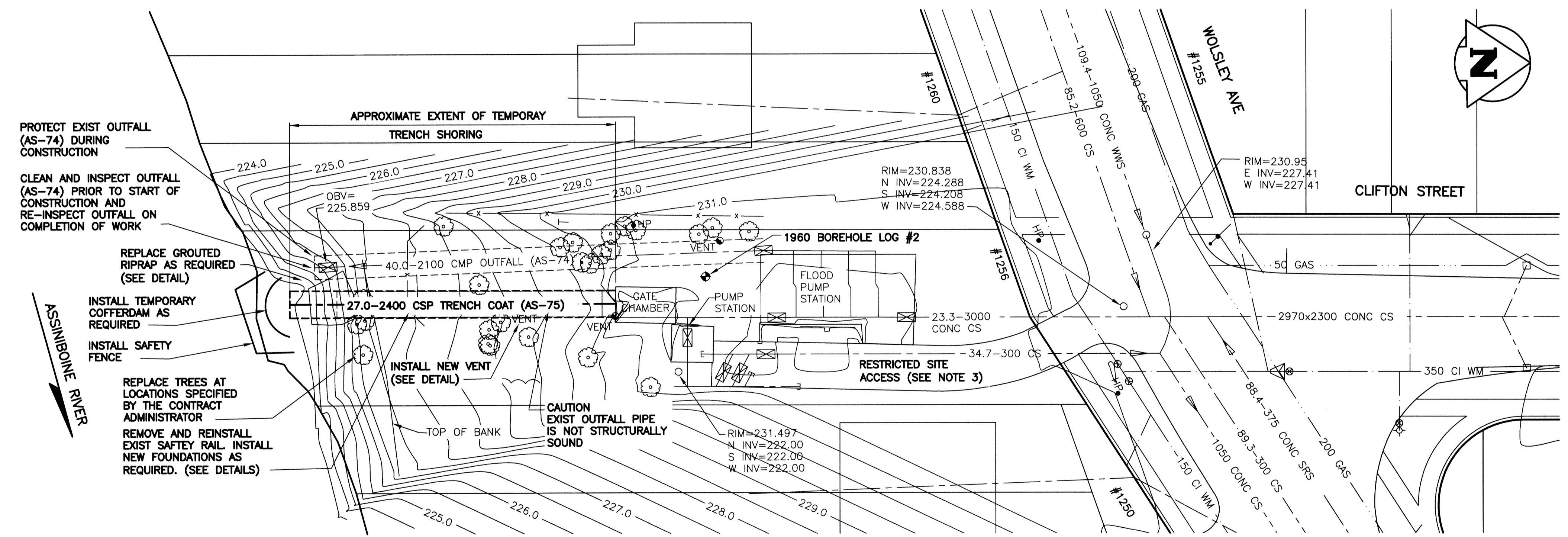
**REINF CONC COLLAR DETAILS**  
SCALE: NTS



**PIPE BEDDING DETAILS**  
SCALE: NTS



**PIPE VENT DETAILS**  
SCALE: NTS



**PROPERTY LIMITS DELINEATION**  
 DELINEATION OF PROPERTY LIMITS AS SHOWN ON THIS DWG DOES NOT REPRESENT A "LEGAL SURVEY". KGS GROUP MAKES NO REPRESENTATION OR WARRANTY AS TO THE ACCURACY OF PROPERTY LIMITS DELINEATED ON THIS DWG, NOR ON THE DIMENSIONAL ACCURACY OF DWG FEATURES RELATIVE TO THOSE PROPERTY LIMITS.

- NOTE:**
- NO STOCK PILING OF MATERIAL ON RIVER BANK. ALL EXCAVATED MATERIAL TO BE REMOVED FROM SITE.
  - THE CONTRACTOR SHALL PROVIDE TEMPORARY SHORING WHERE REQUIRED IN ACCORDANCE WITH THE SPECIFICATIONS.
  - MINIMAL CLEARANCES EXISTS ON SITE FOR ACCESS AND EGRESS OF HEAVY EQUIPMENT.
  - HEAVY CONSTRUCTION VEHICLES ARE NOT PERMITTED ABOVE THE 2100# CMP OUTFALL (AS-74).

**METRIC**

WHOLE NUMBERS INDICATE MILLIMETRES  
DECIMAL NUMBERS INDICATE METRES

**APEGM**  
 Certificate of Authorization  
 KGS Group  
 No. 245

EXISTING	LEGEND-PLAN	PROPOSED	EXISTING	LEGEND-PLAN	PROPOSED	EXISTING	LEGEND-PROFILE	PROPOSED
---	LAND DRAINAGE SEWER	---	---	TEST HOLE	---	---	---	---
---	WASTE WATER SEWER	---	---	GUY WIRE	---	---	---	---
---	GAS	---	---	LIGHT STANDARD	---	---	---	---
---	HYDRO	---	---	BACK OF CURB	---	---	---	---
---	M.T.S.	---	---	CONCRETE	---	---	---	---
---	WATERMAIN	---	---	ASPHALT	---	---	---	---
---	HYDRANT	---	---	SIDEWALK	---	---	---	---
---	VALVE	---	---	PROPERTY LINE	---	---	---	---
---	MANHOLE	---	---	SURVEY BAR	---	---	---	---
---	CATCH BASIN	---	---	GEODETC BENCHMARK	---	---	---	---
---	CURB INLET	---	---	ELEVATION	---	---	---	---
---	POLES	---	---		---	---	---	---
---		---	---		---	---	---	---

**LOCATION APPROVED UNDERGROUND STRUCTURES**

SUPV. U/G STRUCTURES DATE COMMITTEE

**NOTE:**  
 LOCATION OF UNDERGROUND STRUCTURES AS SHOWN ARE BASED ON THE BEST INFORMATION AVAILABLE BUT NO GUARANTEE IS GIVEN THAT ALL EXISTING UTILITIES ARE SHOWN OR THAT THE GIVEN LOCATIONS ARE EXACT. CONFIRMATION OF EXISTENCE AND EXACT LOCATION OF ALL SERVICES MUST BE OBTAINED FROM THE INDIVIDUAL UTILITIES BEFORE PROCEEDING WITH CONSTRUCTION.

B.M.	KGS BASE ELEV.	DWGS BASED ON C.S.R.S. NAD 83 SYSTEM, UTM GRID

DESIGNED BY		CHECKED BY	
RBO		RJH	
DRAWN BY		APPROVED BY	
DMW			
HOR. SCALE: 1:250		RELEASED FOR CONSTRUCTION:	
VERTICAL: 1:50		DATE	
0	ISSUED FOR TENDER	12/11/30	RBO
NO.	REVISIONS	DATE	BY

ENGINEER'S SEAL

**PROVINCE OF MANITOBA**  
**R. OFFMAN**  
 Member  
 24701  
 REGISTERED PROFESSIONAL ENGINEER

CONSULTANT DRAWING NO.  
**12-0107-013**

**THE CITY OF WINNIPEG**  
 WATER AND WASTE DEPARTMENT

PROJECT TITLE  
**2012 OUTFALL RENEWAL/REHABILITATION PROGRAM**  
**CLIFTON STREET OUTFALL (AS-75)**  
**PLAN AND PROFILE**

SHEET OF  
**03** OF **09**

COMPUTER FILE NAME  
**12-0107-013**

CITY DRAWING NUMBER  
**LD-6948**